



KORTEN

Espesor / Thickness

12 mm

6 mm









4 mm

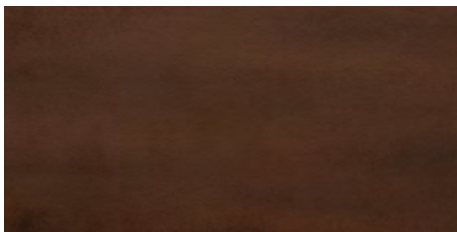
Acabado / Finishing

DT (Digital Texture)



KORTEN

FORMATO FORMAT	COLOR COLOUR	ACABADO Y GRUPO DE PRECIO / FINISHING & PRICE GROUP		
		12 mm	6 mm R	4 mm (Pieza + Malla / Piece + Mesh)
		DT Digital Texture	DT Digital Texture	DT Digital Texture
1600 x 3200 mm 63" x 126" 	CORTEN	352 	363 	374 
1600 x 1600 mm 63" x 63" 		----- 	379 	----- 



CORTEN
DT (Digital Texture)

PACKING

PACKING CAJÓN DE MADERA / PACKING WOODEN BOX

Espeor / Thickness 6 mm R	CAJÓN DE MADERA / PACKING WOODEN BOX			
FORMATO FORMAT	Peso tabla completa Weight of whole slab	Piezas / Caja Pieces / Box	Cajas / Palet Boxes / Pallet	Kg / Palet Kg / Pallet
1600x3200 mm R / 63"x126"	73 kg	16*	1*	1350*
1600x1600 mm R / 63"x63"	37 kg	20*	1*	820*
1000x3000 mm R / 39 ^{3/8} "x118 ^{1/8} "	43 kg	20*	1*	960*

* Los datos de packing corresponden a la venta de pallet completo; las cantidades inferiores tendrán un cargo correspondiente a los costes adicionales de manipulación y embalaje de estas piezas (1600 x 3200 / 1600 x 1600 / 1000 x 3000 mm). Los precios de los pallets se adaptarán por trimestre según el mercado. Contacte con el departamento comercial para más información.

* The packing data refers to the sale of a complete pallet; an additional charge will be applied to lower quantities to cover the costs of handling and packaging these items (1600 x 3200 / 1600 x 1600 / 1000 x 3000 mm). Pallet prices will be adapted per quarter according to the market. Through our Sales Department you can get more information.

PACKING CABALLETE / PACKING A-FRAME

CABALLETE / PACKING A-FRAME				
Espeor Thickness	Formato Format	Peso tabla completa Weight of whole slab	Piezas por Caballete Slabs per A-Frame	Peso por Caballete Weight per A-Frame
20 mm*	1500x3200 mm / 59"x126"	250 kg	12	3185 kg
12 mm*	1600x3200 mm / 63"x126"	160 kg	20	3385 kg
	1500x3200 mm / 59"x126"***	150 kg**	20**	3185 kg**
	1000x3200 mm / 39 ^{3/8} "x126"	100 kg	20	2140 kg
6 mm R*	1600x3200 mm R / 63"x126"	73 kg	40	3075 kg
	1600x1600 mm R / 63"x63"	37 kg	40	1560 kg
	1000x3000 mm R / 39 ^{3/8} "x118 ^{1/8} "	43 kg	40	1855 kg
4 mm*	1600x3200 mm / 63"x126"	48 kg	60	3065 kg

* Los datos de packing corresponden a la venta de caballete completo. Los caballetes se facturan siempre y los precios se adaptarán por trimestre según el mercado. Contacte con el departamento comercial para más información.

* The packing data refers to the sale of a complete A-Frame. Iron A-Frames will always be invoiced and the prices will be adapted per quarter according to the market. Through our Sales Department you can get more information.

** Los datos de packing corresponden al MDi INDUCTION

** The packing data refers to MDi INDUCTION

Los pesos aquí reflejados pueden sufrir ligeras variaciones en función del lote de producción.
Weights shown here may slightly vary depending on the production lot.