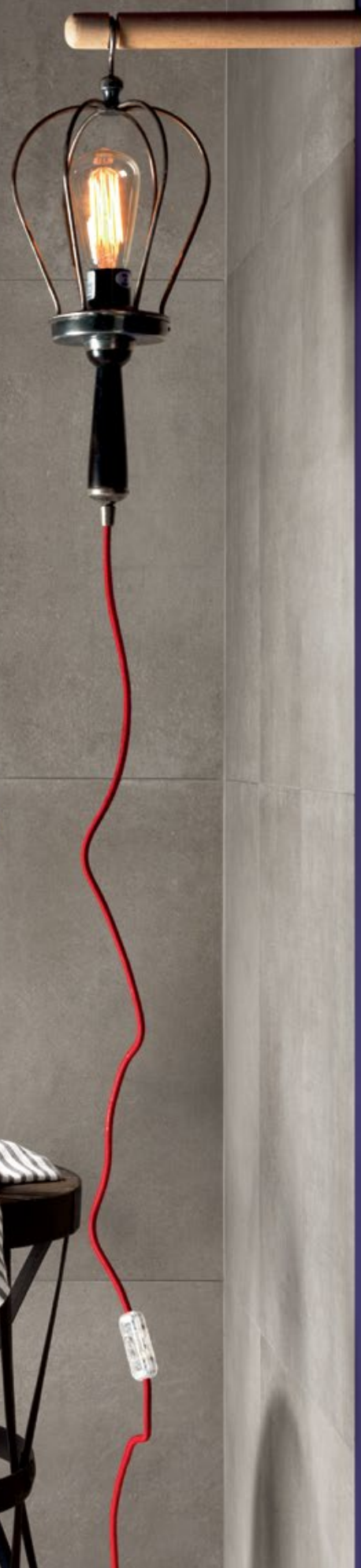


# DISTRICT

NEW CONCRETE



LEA  
CERAMICHE



**SUPERFICI  
CONTEMPORANEE**

Contemporary  
style



# DISTRICT

**4 COLORI**  
street  
avenue  
boulevard  
route

**4 COLORS**  
street  
avenue  
boulevard  
route

**2 FINITURE**  
naturale  
grip

**2 FINISHES**  
naturale  
grip

**4 FORMATI**  
90x90cm  
45x90cm  
60x60cm  
30x60cm

**4 SIZES**  
36"x36"  
18"x36"  
24"x24"  
12"x24"







## BATHROOM

### DISTRICT BOULEVARD

**Pavimento / Floor**  
nat. rett. 60x60cm / 24"x24"

**Parete / Wall**  
nat. rett. 30x60cm / 12"x24"  
Kensington Brick Mauve 31x62cm / 12<sup>1</sup>/<sub>4</sub>"x24<sup>1</sup>/<sub>2</sub>"

La collezione in gres District rappresenta il connubio perfetto tra performance tecnica e ricerca estetica. I moduli posati a terra e lungo le pareti conferiscono alle superfici un segno contemporaneo, garantendo funzionalità e prestazioni tecniche.

The District porcelain stoneware collection represents the perfect union of technical performance and aesthetical research. The tiles laid on floors and walls give the surfaces a contemporary touch, ensuring functionality and technical performances.













## DISTRICT STREET

**Pavimento / Floor**  
nat. rett. 90x90cm / 36"x36"

District è disponibile in quattro formati con moduli dalle dimensioni anche importanti, 90x90cm e 45x90cm. Una nuova proposta dal gusto metropolitano con cui i progettisti possono esprimere la propria creatività progettuale anche per spazi contract.

District is available in four sizes, even in large formats, up to 90x90cm and 45x90cm. A new proposal that has a metropolitan style with which designers can express their creativity even in non-residential projects.



# PUBLIC AREAS



DISTRICT  
ROUTE

Pavimento / Floor  
nat. rett. 45x90cm / 18"x36"



**DISTRICT  
ROUTE**

**Pavimento / Floor**  
nat. rett. 45x90cm / 18"x36"







**DISTRICT  
STREET**

**Pavimento / Floor**  
nat. rett. 90x90cm / 36"x36"



# LIVING







DISTRICT  
ROUTE

Pavimento / Floor  
nat. rett. 90x90cm / 36"x36"



## STREET



30x60cm / 12"x24"  
nat. rett. (spessore 10mm) LGVDS30



60x60cm / 24"x24"  
nat. rett. (spessore 10mm) LGWDS30  
grip rett. (spessore 10mm) LGWDS35

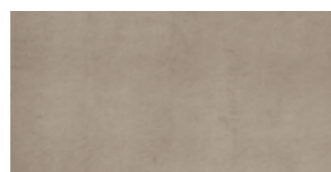


45x90cm / 18"x36"  
nat rett. (spessore 11mm) LGGDS30



90x90cm / 36"x36"  
nat rett. (spessore 11mm) LG9DS30

## AVENUE



30x60cm / 12"x24"  
nat. rett. (spessore 10mm) LGVDS00



60x60cm / 24"x24"  
nat. rett. (spessore 10mm) LGWDS00  
grip rett. (spessore 10mm) LGWDS05

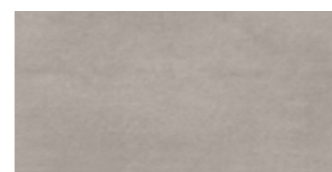


45x90cm / 18"x36"  
nat rett. (spessore 11mm) LGGDS00



90x90cm / 36"x36"  
nat rett. (spessore 11mm) LG9DS00

## BOULEVARD



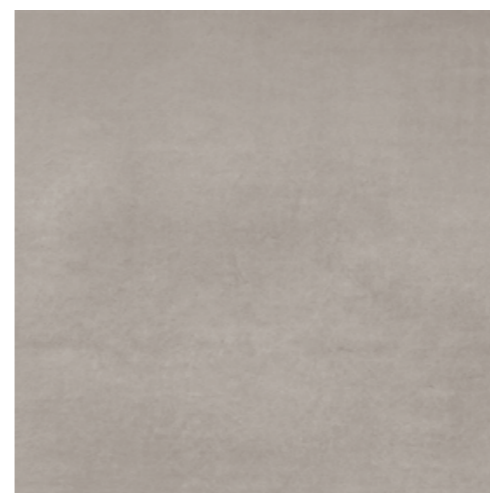
30x60cm / 12"x24"  
nat. rett. (spessore 10mm) LGVDS10



60x60cm / 24"x24"  
nat. rett. (spessore 10mm) LGWDS10  
grip rett. (spessore 10mm) LGWDS15

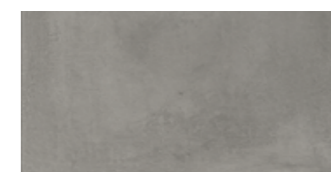


45x90cm / 18"x36"  
nat rett. (spessore 11mm) LGGDS10



90x90cm / 36"x36"  
nat rett. (spessore 11mm) LG9DS10

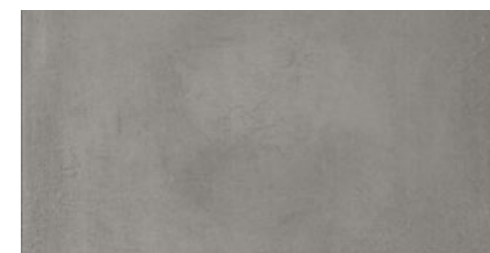
## ROUTE



30x60cm / 12"x24"  
nat. rett. (spessore 10mm) LGVDS20



60x60cm / 24"x24"  
nat. rett. (spessore 10mm) LGWDS20  
grip rett. (spessore 10mm) LGWDS25



45x90cm / 18"x36"  
nat rett. (spessore 11mm) LGGDS20

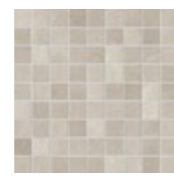


90x90cm / 36"x36"  
nat rett. (spessore 11mm) LG9DS20

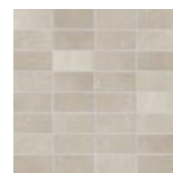




**DECORO MURETTO**  
30x60cm / 12"x24"  
street LGVDS83



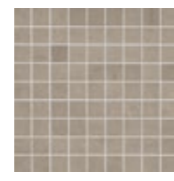
**MOSAICO 81**  
30x30cm / 12"x12"  
street LG9DS83



**MOSAICO MATTONE**  
30x30cm / 12"x12"  
street LG9DS93



**DECORO MURETTO**  
30x60cm / 12"x24"  
avenue LGVDS80



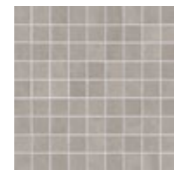
**MOSAICO 81**  
30x30cm / 12"x12"  
avenue LG9DS80



**MOSAICO MATTONE**  
30x30cm / 12"x12"  
avenue LG9DS90



**DECORO MURETTO**  
30x60cm / 12"x24"  
boulevard LGVDS81



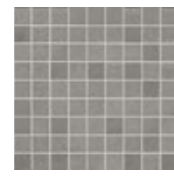
**MOSAICO 81**  
30x30cm / 12"x12"  
boulevard LG9DS81



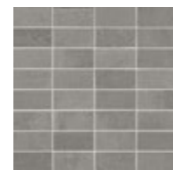
**MOSAICO MATTONE**  
30x30cm / 12"x12"  
boulevard LG9DS91



**DECORO MURETTO**  
30x60cm / 12"x24"  
route LGVDS82



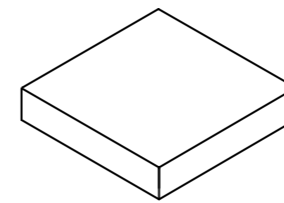
**MOSAICO 81**  
30x30cm / 12"x12"  
route LG9DS82



**MOSAICO MATTONE**  
30x30cm / 12"x12"  
route LG9DS92

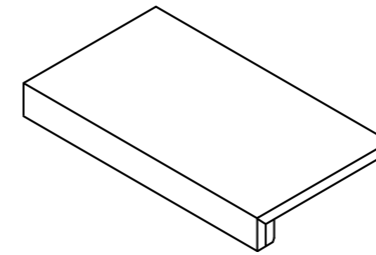
**NATURALE**

**GRIP**



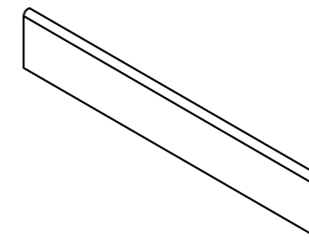
**ANGOLO GRADINO PLUS nat.\***  
35x35cm / 13 3/4"x13 3/4"  
street LG9DSA3  
avenue LG9DSA0  
boulevard LG9DSA1  
route LG9DSA2

**ANGOLO GRADINO PLUS grip\***  
35x35cm / 13 3/4"x13 3/4"  
street LG9DSA8  
avenue LG9DSA5  
boulevard LG9DSA6  
route LG9DSA7



**GRADINO PLUS nat.\***  
35x60cm / 13 3/4"x24"  
street LG9DSG3  
avenue LG9DSG0  
boulevard LG9DSG1  
route LG9DSG2

**GRADINO PLUS grip\***  
35x60cm / 13 3/4"x24"  
street LG9DSG8  
avenue LG9DSG5  
boulevard LG9DSG6  
route LG9DSG7



**BATTISCOPA nat.**  
10x60cm / 4"x24"  
street LGBDS30  
avenue LGBDS00  
boulevard LGBDS10  
route LGBDS20

\*su richiesta. Per maggiori informazioni circa quantità minime e tempi di consegna rivolgersi all'ufficio commerciale.  
upon request. For more information about minimum quantities and delivery times please contact the sales department.  
sur demande. Pour plus d'informations sur les quantités minimales et délais de livraison s'il vous plaît contacter le département des ventes.  
auf Anfrage. Für weitere Infos über die Mindestmengen und Lieferzeiten wenden Sie sich bitte an unserer Verkaufsabteilung.



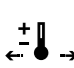
## DISTRICT

### gres tutta massa UGL









full-body porcelain  
grès cérame en pleine masse  
vollgemischtes durchgefärbtes feisteinzeug

spessore 10mm / 11mm

thickness  
épaisseur  
stärke

caratteristiche tecniche* technical characteristics caractéristiques techniques technische eigenschaften	metodo di prova test method methode d'essai prüfmethode	fondi plain tile fond unifliese
 <b>assorbimento d'acqua (E)</b> water absorption (E) absorption d'eau (E) wasserabsorption (E)	iso 10545-3	≤ 0,04%
 <b>resistenza al gelo</b> frost resistance résistance au gel frostdändigkei	iso 10545-12	resistente résistant beständig
 <b>resistenza alla flessione</b> bending strength résistance à la flexion beigefestigkeit	iso 10545-4	≥ 50 N/mm <sup>2</sup>
 <b>sforzo di rottura (S)</b> breaking strength (S) chargement de rupture (S) bruchlast (S)	iso 10545-4	spess. 11mm: ≥ 3000 N spess. 10mm: ≥ 2500 N
 <b>resistenza all'abrasione profonda</b> résistance to deep abrasion résistance à l'abrasion profonde widerstand gegen tiefenabrier	iso 10545-6	≤ 145 mm <sup>3</sup>
 <b>dilatazione termica lineare</b> thermal expansion dilatation thermique linéaire thermische dilatation	iso 10545-8	α ≤ 7x10 <sup>-6</sup> °C <sup>-1</sup>
 <b>resistenza agli sbalzi termici</b> thermal shock resistance résistance aux chocs thermiques temperatur wechselbeständigkeit	iso 10545-9	resistente résistant beständig
 <b>resistenza attacco chimico</b> chemical resistance résistance chimique chemischee beständigkeit	iso 10545-13	uha, ula resistente résistant beständig
 <b>resistenza alle macchie</b> stain resistance résistance aux taches fleckenbeständigkeit	iso 10545-14	5 resistente résistant beständig
 <b>resistenza allo scivolamento</b> slip resistance résistance au glissement rutschfestigkeit	din 51130	R10(nat.) R11(grip)
 <b>resistenza allo scivolamento</b> slip resistance résistance au glissement rutschfestigkeit	din 51097	B (A+B) (nat.) C (A+B+C) (grip)
 <b>coefficiente di attrito dinamico</b> dynamic friction coefficient coefficient de friction dynamique dynamischer reibungskoeffizient	B.C.R. tortus	μ > 0,40
 <b>dynamic coefficient of friction (DCOF)</b>	ANSI A 137.1:2012 (BOT 3000)	DCOF ≥ 0.42
 <b>wet pendulum test AUS</b>	AS 4586:2013	class P4(W) (grip)
 <b>pendulum test UK</b>	BS 7976:2002	slider 96 wet: 36+ (grip) slider 55 wet: 36+ (grip)
 <b>stonalizzazione</b> shading denuançage spieifarbig		V3

\*ISO 13006-G Bla UGL – EN 14411-G Bla UGL – ANSI A 137.1 (Un glazed Porcelain Tiles - Class P1)

impieghi uses emploi anwendungsbereiche		
 <b>alberghi</b> hotels hotels hotels		<b>locali pubblici</b> public spaces lieux publics öffentliche bereiche
 <b>abitazioni</b> housing maisons wohnbereiche		<b>aeroporti</b> airports aéroports flughafen
 <b>bar - ristoranti</b> bar - restaurants bar - restaurants cafés - restaurants, gasthäuser		<b>centri commerciali</b> malls centre commerciaux einkaufszentren
 <b>negozi</b> shops magasins geschäfte		<b>stazioni</b> train stations gares bahnhöfe

### imballaggi packing emballage verpackungen

articolo	scatola			europallet				
	pz.	m <sup>q</sup>	kg	scat.	m <sup>q</sup>	kg		
fondo	90x90	36"x36"	2	1,62	40,0	24	38,9	960,0
fondo	45x90	18"x36"	3	1,22	30,0	30	36,5	900,0
fondo	60x60	24"x24"	4	1,44	33,0	32	46,1	1056,0
fondo	30x60	12"x24"	8	1,44	33,0	32	46,1	1056,0
muretto	30x60	12"x24"	4	0,72	15,6	30	21,6	468,0
mosaico 81	30x30	12"x12"	5	0,45	10,0	60	27,0	600,0
mosaico mattone	30x30	12"x12"	5	0,45	10,0	60	27,0	600,0
battiscopa	10x60	4"x24"	12	7,2 m.l.	16,0	60	432,0 m.l.	960,0
gradino plus	35x60	13 <sup>3</sup> / <sub>4</sub> "x24"	4	0,84	21,2	16	13,4	339,2
angolo gradino plus	35x35	13 <sup>3</sup> / <sub>4</sub> "x13 <sup>3</sup> / <sub>4</sub> "	4	0,49	16,0	30	14,7	480,0

Le rappresentazioni fotografiche e descrittive dei prodotti di Lea Ceramiche riportate sui depliant, sui cataloghi e sugli altri materiali pubblicitari dell'azienda, sono puramente illustrative dello specifico prodotto rappresentato. Si precisa infatti che, successivamente alla pubblicazione dei materiali pubblicitari dell'azienda, il prodotto potrebbe subire leggere modifiche nel relativo processo produttivo, al fine di renderlo tecnologicamente migliore. Tali aggiustamenti tecnologici potrebbero determinare lievi differenze, anche estetiche e/o cromatiche, nel prodotto medesimo, con la conseguenza che lo stesso potrebbe risultare diverso da come rappresentato e/o illustrato e/o descritto nel materiale pubblicitario di Lea Ceramiche. Tali differenze non potranno essere in alcun modo considerate dall'acquirente un vizio e/o difetto del materiale ceramico stesso, bensì una caratteristica dello specifico prodotto. Tutti i materiali ceramici che imitano pietre naturali presentano differenze di colore e sfumature che non potranno in nessun modo essere considerate quale difetto del prodotto, ma bensì una qualità caratteristica di tali tipi di produzione.

The photographs and descriptions of Lea Ceramiche products given in the brochures, catalogues and other corporate advertising materials aim merely to represent the specific products. After the publication of the corporate advertising materials, the products may be slightly modified as a result of technological improvements. Such technological modifications may lead to slight differences in appearance and/or colour of the products, which may therefore differ from the representations, illustrations or descriptions given in the Lea Ceramiche advertising materials. Such differences shall in no way be deemed to be faults and/or defects in the ceramic materials, but rather intrinsic features of the specific products. All ceramic materials that imitate natural stone differ in color and nuances, and this cannot any in way be considered as a product defect, but rather a characteristic of these types of products.





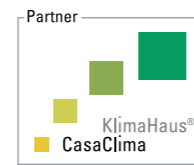
iso 14001



iso 9001



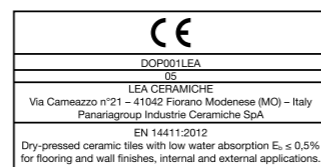
emas



casaclima



leed



marchio CE



leed

\* LEED  
Lea Ceramiche, tramite la holding Panariagroup Industrie Ceramiche S.p.A., è socio ordinario del Green Building Council e del GBC Italia. Through Panariagroup Industrie Ceramiche S.p.A., Lea Ceramiche is an ordinary member of the Green Building Council and the GBC Italia. Par le biais de Panariagroup Industrie Ceramiche S.p.A., Lea Ceramiche est membre ordinaire du Green Building Council et du GBC Italia. Lea Ceramiche, durch die Holding Panariagroup Industrie Ceramiche S.p.A., ist ordentliches Mitglied von dem Green Building Council und dem GBC Italien. Lea Ceramiche, a través del holding Panariagroup Industrie Ceramiche S.p.A., es miembro afiliado del Consejo Construcción Verde y del Consejo Construcción Verde de Italia.

\*\* LEED  
Il contenuto di materiale riciclato "pre-consumo" della serie District è del 40%, come certificato da ente esterno qualificato (certificato disponibile sul sito [www.ceramichelea.com](http://www.ceramichelea.com)). District is produced with 40% of pre-consumer materials, as certified by a qualified external company (certificate available on the website [www.ceramichelea.com](http://www.ceramichelea.com)).

\*\*\* CASACLIMA  
Lea Ceramiche, tramite la holding Panariagroup Industrie Ceramiche S.p.A., ha ottenuto la certificazione Partner Casaclima. Through Panariagroup Industrie Ceramiche S.p.A., Lea Ceramiche has obtained the Partner Casaclima certification. Par le biais de Panariagroup Industrie Ceramiche S.p.A., Lea Ceramiche a obtenu la certification Partner Casaclima. Lea Ceramiche, durch die Holding Panariagroup Industrie Ceramiche S.p.A., hat die Bescheinigung als Partner Casaclima bekommen. Lea Ceramiche, a través del holding Panariagroup Industrie Ceramiche S.p.A., ha obtenido la certificación Partner Casaclima.



ADIMEMBER



**LEA CERAMICHE HA SCELTO MICROBAN®,  
IL LEADER MONDIALE NELLA PROTEZIONE ANTIBATTERICA**

**LEA CERAMICHE CHOOSES MICROBAN®,  
THE GLOBAL LEADER IN ANTIMICROBIAL TECHNOLOGY**

- **ATTIVA 24 ORE SU 24**  
*ACTIVE 24/7*
- **EFFICACE CONTRO MACCHIE E ODORI CHE CAUSANO BATTERI**  
*EFFECTIVE AGAINST STAIN AND ODOR CAUSING BACTERIA*
- **MOLTEPLICI APPLICAZIONI ED UTILIZZI**  
*MULTIPLE APPLICATIONS*
- **TRATTAMENTO PERMANENTE**  
*PERMANENT PROTECTION*
- **INTEGRATA NELLA PIASTRELLA**  
*INTEGRATED IN THE TILE*
- **EFFICACE SU OGNI SUPERFICIE**  
*EFFICIENT ON ANY SURFACE*



# DISTRICT

NEW CONCRETE



# LEA

CERAMICHE

LEA CERAMICHE  
Via Cameazzo, 21  
41042 Fiorano Modenese  
Modena Italy

Tel +39 0536 837811  
Fax +39 0536 830326  
info@ceramichelea.it  
www.ceramichelea.com

Panariagroup Industrie Ceramiche  
S.p.A.

SHOWROOM LEA CERAMICHE  
Via Durini, 3  
20122 Milano

Tel +39 02 76011406  
showroom\_milano@ceramichelea.it

LEA NORTH AMERICA, LLC  
800 Clanton Road, Suite N  
Charlotte, NC 28217

Tel +1 704 522 6300  
Fax +1 704 522 6080  
info@leausa.us  
www.leausa.us